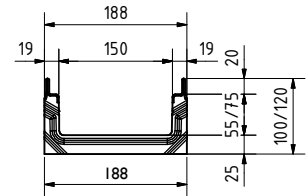
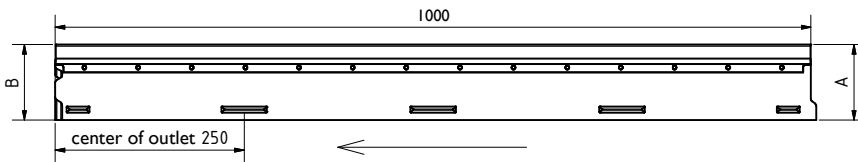
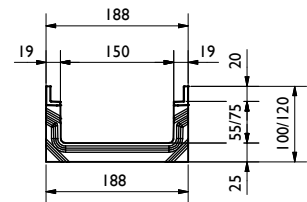
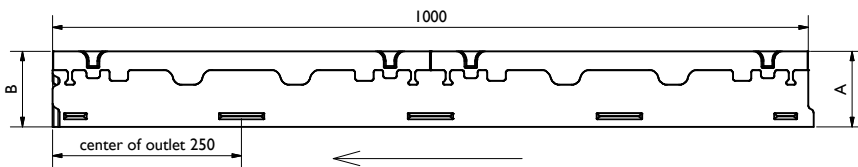


I. Rinnen/Channel

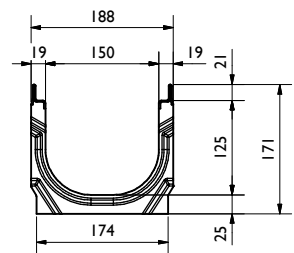
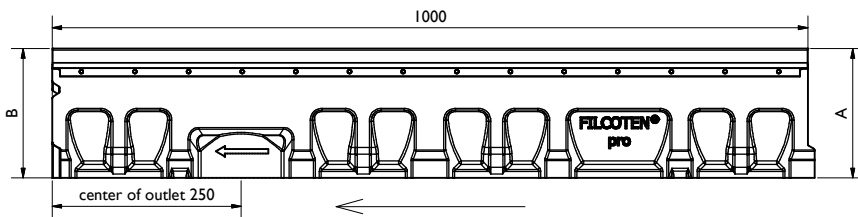
pro NW150 mini 100/120 V-E



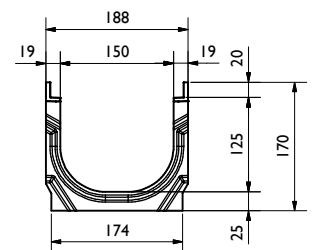
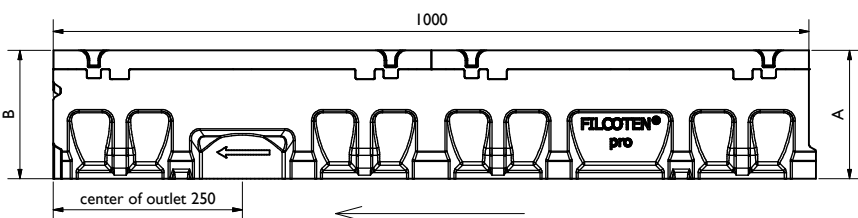
pro NW150 mini 100/120 G



pro NW150 mini 170 V-E



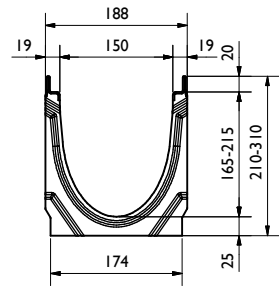
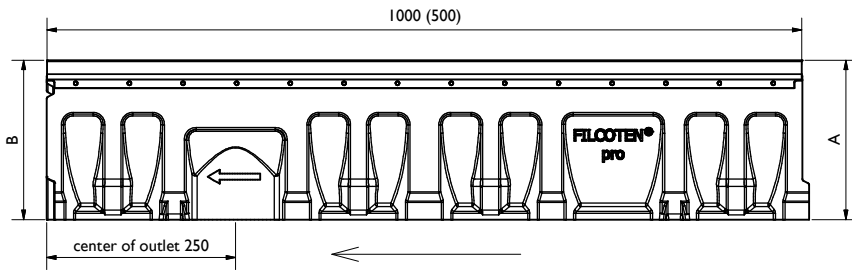
pro NW150 mini 170 G



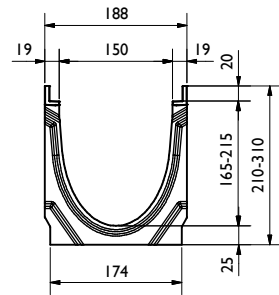
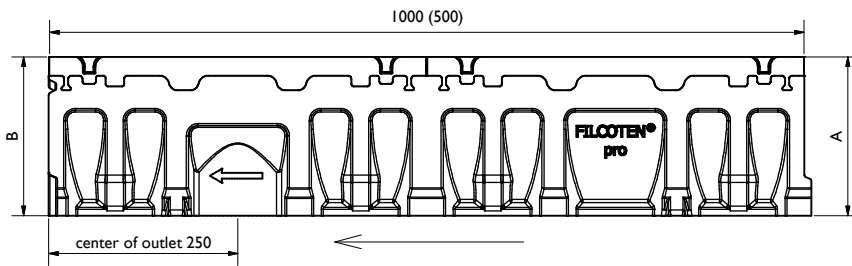
Rinne / channel - Maße / dimensions [mm]						
Typ	Höhe A height A	Höhe B height B	Länge length	BG code V	BG code E	BG code G
mini 100	100	100	1000	10515202	10515302	10515102
mini 120	120	120	1000	10515200	10515300	10515100
mini 170	170	170	1000	10515201	10515301	10515101

Legende / explanation:	
V:	verzinkter Stahl / galvanized steel
E:	Edelstahl / stainless steel
G:	Guß Eisen / ductil iron
H:	Holz / wood

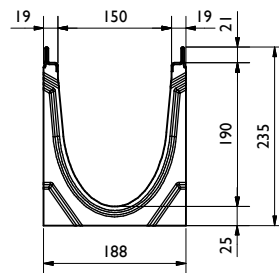
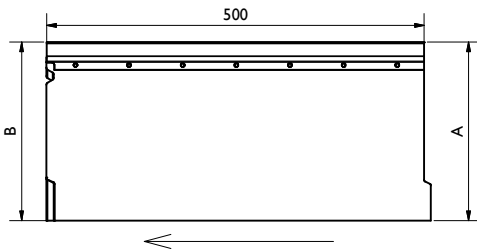
pro NW150 V-E



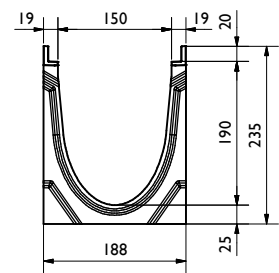
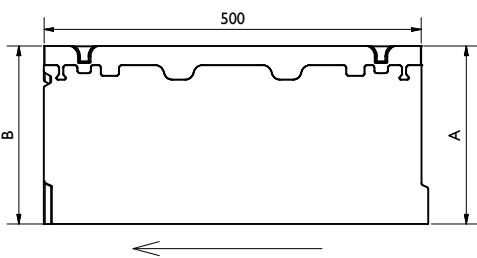
pro NW150 G



pro NW150 V-E, Nr. 5-0 f. seitl. Bohrung/f. side outlet drilling



pro NW150 G, Nr. 5-0 f. seitl. Bohrung/f. side outlet drilling

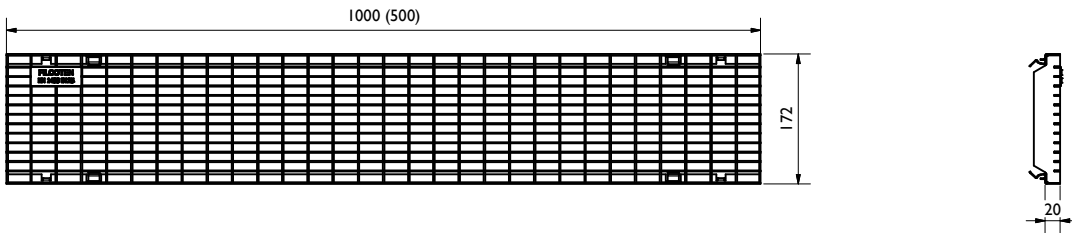


Rinne / channel - Maße / dimensions [mm]						
Typ	Höhe A height A	Höhe B height B	Länge length	BG code V	BG code E	BG code G
0	210	210	1000	10615200	10615300	10615100
0 (0,5m)	210	210	500	10615280	10615380	10615180
1	210	215	1000	10615201	10615301	10615101
2	215	220	1000	10615202	10615302	10615102
3	220	225	1000	10615203	10615303	10615103
4	225	230	1000	10615204	10615304	10615104
5	230	235	1000	10615205	10615305	10615105
5-0	235	235	1000	10615261	10615361	10615161
5-0 (0,5m)	235	235	500	10615281	10615361	10615181
6	235	240	1000	10615206	10615306	10615106
7	240	245	1000	10615207	10615307	10615107
8	245	250	1000	10615208	10615308	10615108
9	250	255	1000	10615209	10615309	10615109
10	255	260	1000	10615210	10615310	10615110
10-0	260	260	1000	10615262	10615361	10615162
20-0	310	310	1000	10615264	10615364	10615164

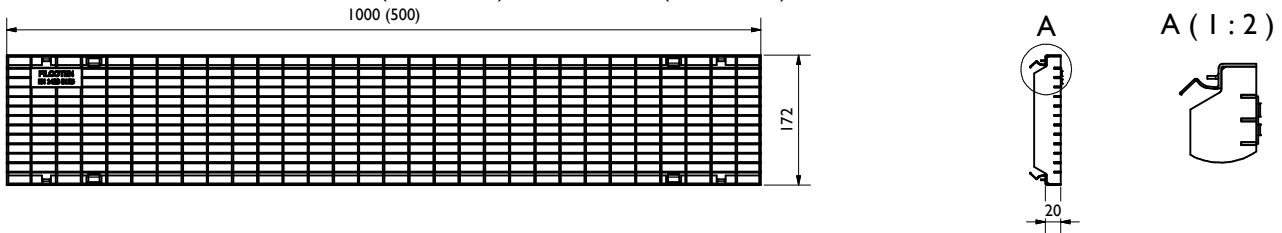
Legende / explanation:	
V:	verzinkter Stahl / galvanized steel
E:	Edelstahl / stainless steel
G:	Gußeisen / ductil iron
H:	Holz / wood

2. Gitterrost / Mesh grating:

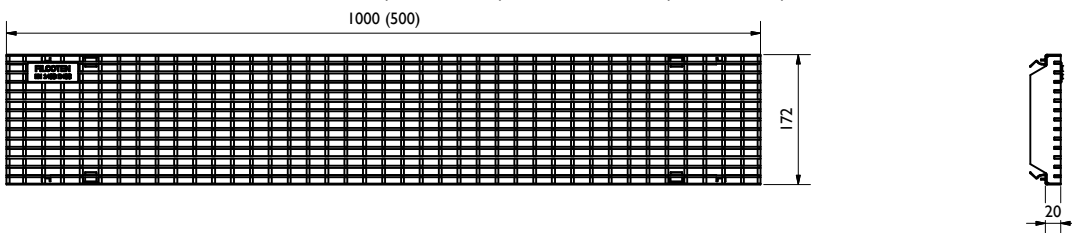
B125kN MW30/10: V 17015220 (17015221)



C250kN MW30/10: V 17015222 (17015223), E 17015322 (17015323)

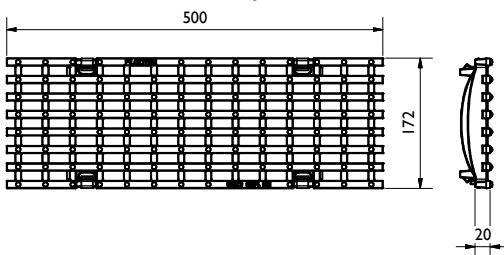


D400kN MW25/10: V 17015226 (17015227), E 17015326 (17015327)

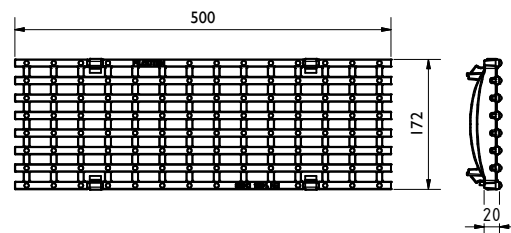


2. Gußrost / Ductil iron grating:

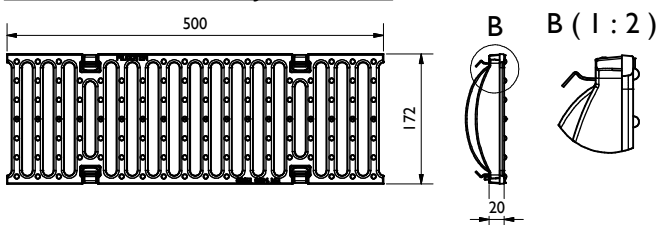
C250kN MW29/13: GJS 17015101



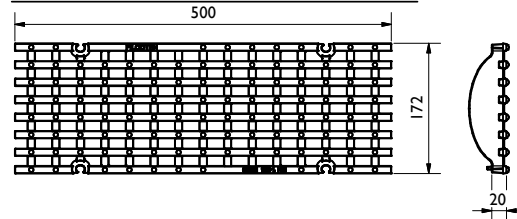
D400kN MW29/13: GJS 17015104



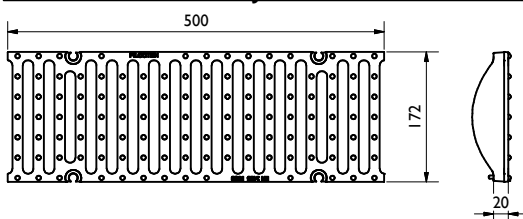
E600kN SW14/150: GJS 17015105



E600kN MW22/13: GJS 17015103, 4-fach verschraubbar/4-times bolted

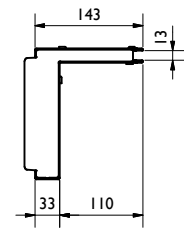
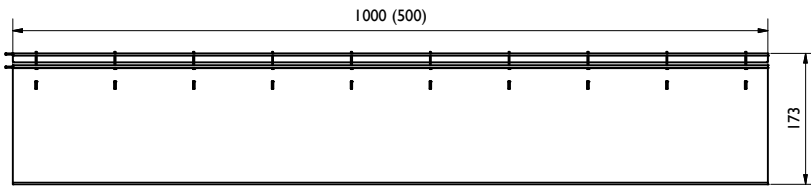


F900kN SW14/150: GJS 17015107, 4-fach verschraubbar/4-times bolted

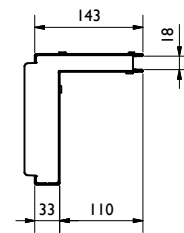
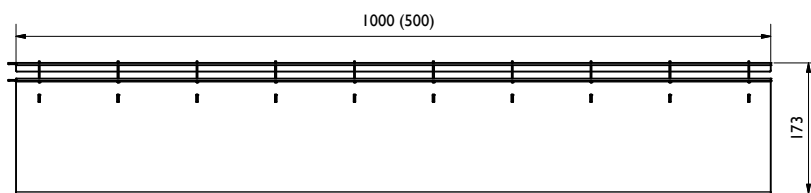


2. Schlitzaufsatz / Slot top:

C250kN SW12,5: V 17115243 (17115244), E 17115343 (17115344)

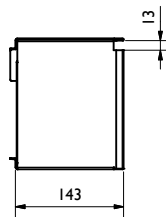
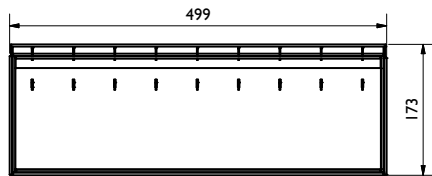


C250kN SW18: V 17115233 (17115234), E 17115333 (17115334)

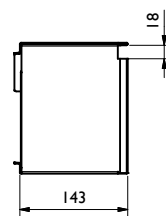
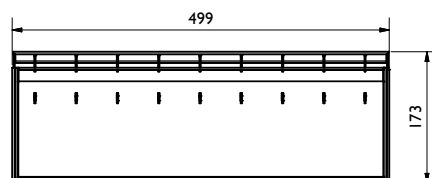


2. Revisionschacht / Maintenance unit:

C250kN SW12,5: V 17115281, E 17115381

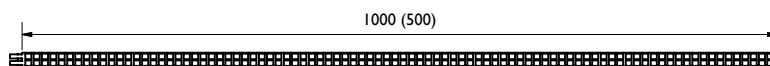


C250kN SW18: V 17115295, E 17115395



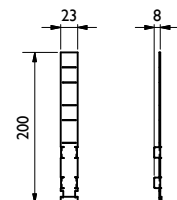
2. Slotzeinlage / Slot inlay square-perf. 8/8:

V 37951 (37950), E 37956 (37955)



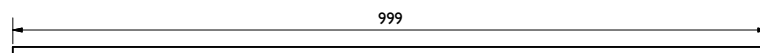
4. Stirnplatte/End cap:

V 17110280, E 17110380



2. Bauzeitabdeckung / Construction time barrier SW 18:

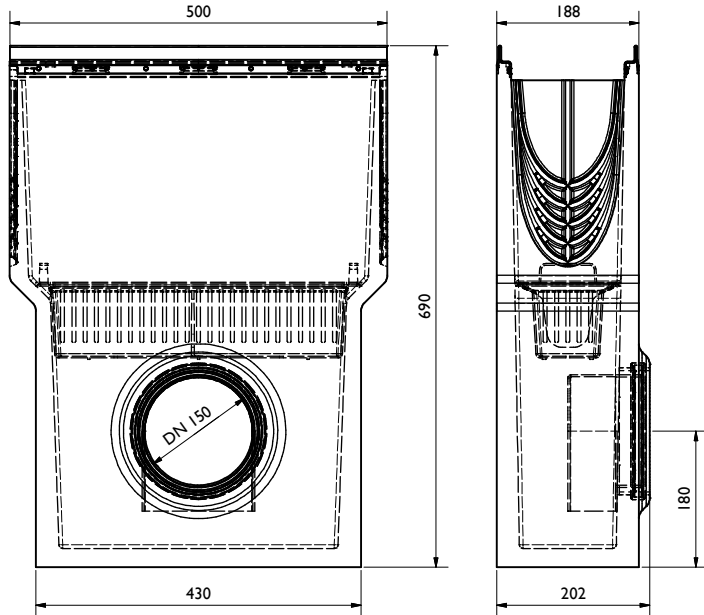
H 37961



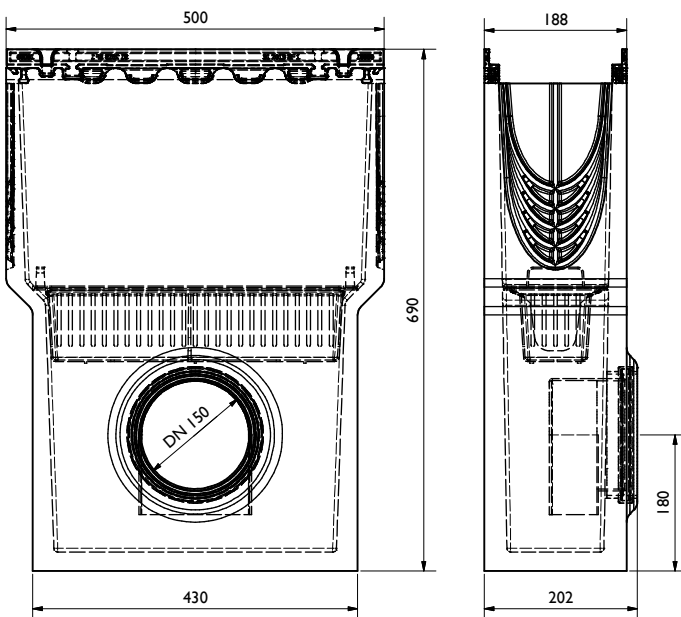
3. Sinkkasten / Sump unit:

(optional: Geruchsverschluss / Drain trap: 30057
Schlammeimer / Silt bucket: 22516)

V 10615290, E 10615390

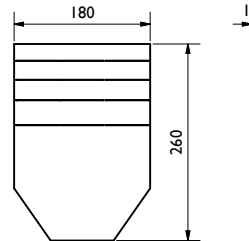


G 10615190

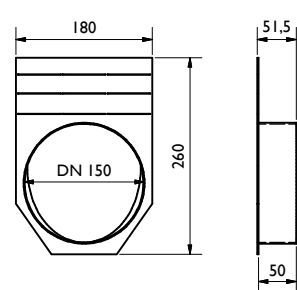


4. Stirn-/ Endplatte / End cap:

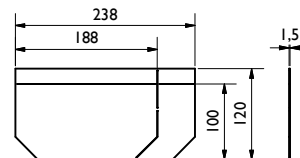
V 19015230, E 19015330



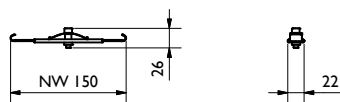
V 19015231, E 19015331



mini: V 19015200, E 19015300



5. Vandalismus Verriegelung / Anti-vandalism locking device:
32088:



6. Verschraubungsmaterial / Bolting material:

V 32103



E 32109:

